

**Limited production model.**

For availability, please email [customerservice@mtibaths.com](mailto:customerservice@mtibaths.com)  
or call 800-783-8827

DESIGNER COLLECTION TUBS  
MODEL # 66



## Primm

65.5" x 41.5" x 26.75"

**GENERAL SPECIFICATIONS:**

**Material** - Acrylic

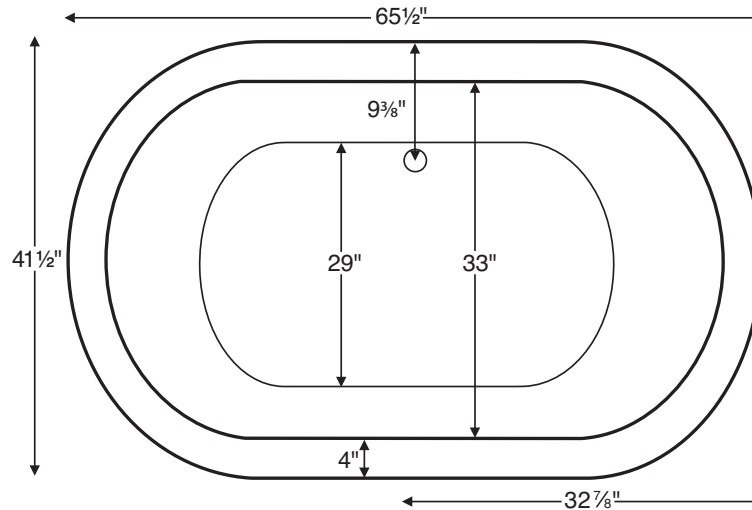
**Installation** - Freestanding

*Not recommended as a tub / shower combination.*

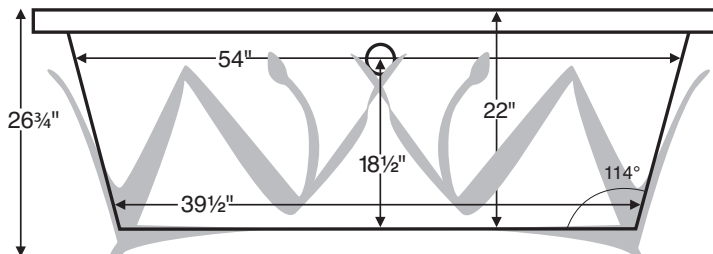
**Soaker Weight** - 200 lbs / 57 kg

**Maximum Fill** - 94 gal to overflow

*NOTE: Filling this tub to the maximum may require an above average size or dedicated water heater.*



Requires use of a wall-mounted or freestanding tub filler.



**IMPORTANT ORDERING & INSTALLATION INFORMATION:**

- The handcrafted wrought iron base, in natural finish, includes variations in tone and texture, which are intrinsic to the material itself and contribute to its overall rustic beauty.
- If a smoother, more consistent finish is desired, the base may be ordered with a powder-coat finish, available in Bronze Rock, Flat Black or Gloss Black. *Must specify on order.*
- Specifications and configurations are subject to change without notice.
- Measurements are  $\pm 1/2$ " and are subject to change without notice.
- Measurements herein supersede all others published prior to publication date shown below.

See the "Designer Collection Tubs Installation & Operation Manual" included with tub delivery or go to [mtibaths.com/support/installation\\_operation/manuals](http://mtibaths.com/support/installation_operation/manuals) for all the information necessary to install and operate the tub.

MTI's Customer Service Department is available Monday-Friday 8am-6pm EST at 800-783-8827 or [customerservice@mtibaths.com](mailto:customerservice@mtibaths.com) to answer any questions pertaining to ordering or installation.

Hydrotherapy Package	Package Contents	Part #	MSRP
<b>Soaker</b>	Soaking bath with wrought iron cattails sculptured base. Designed by local Atlanta artist Dennis Primm, this unique bath is available as a soaking bath only. (Call for lead time)	<b>S66</b>	<b>\$5,600</b>

**Lead Time** - Please call MTI at 800-783-8837 or email customerservice@mtibaths.com

Standard Options
<b>Color:</b> White (CWH) This tub is only available in white.
<b>Textured, Slip-Resistant Bottom</b> - meets ASTM F-462-1994 (TXBTM) <b>\$70</b>
Accessories & Hardware
<b>Floor-Mounted High-Flow Tub Filler</b> - two designs available - see p. C-16 Contemporary - Chrome (FILLC) <b>\$1,900</b> ; Brushed Nickel (FILLBN) <b>\$2,050</b> Traditional - Chrome (FILLTC) <b>\$1,900</b> ; Brushed Nickel (FILLTBN) <b>\$2,050</b>
<b>Drain Kit - Toe-Tap with Decorative Exposed Piping</b> Chrome (DKFTC) <b>\$886</b> ; Brushed Nickel (DKFBN) <b>\$949</b> ; Special Finishes (DKFTSF) <b>\$1,995</b> (send in finish sample for plating)
<b>Pillows</b> - from <b>\$115</b> see p. C-14
<b>Teak Tub Tray</b> - Slatted (TK-TRAY1) or Solid (TK-TRAY2) <b>\$395</b> see p. C-15

### Options Information

#### Floor-Mounted High-Flow Tub Filler -

Choose from contemporary or traditional design to complement most manufacturers' lavatory & shower faucets. Fill rate of 15 gallons per minute at 45 psi. Includes hand-held shower with independent valve. See page C-16 for detailed specifications.



#### Drain & Overflow Kit -

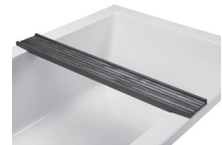
Toe-Tap design with decorative exposed piping. MTI recommends its drain to ensure a perfect fit. Available in chrome, brushed nickel, polished nickel or special finishes\*.

\*Send finish sample to MTI for matching.



#### Teak Tub Tray -

Ideal surface for holding a book, beverage or bath accessories. Two styles available. See page C-15 for detailed specifications.



**Inside view of tub.**