

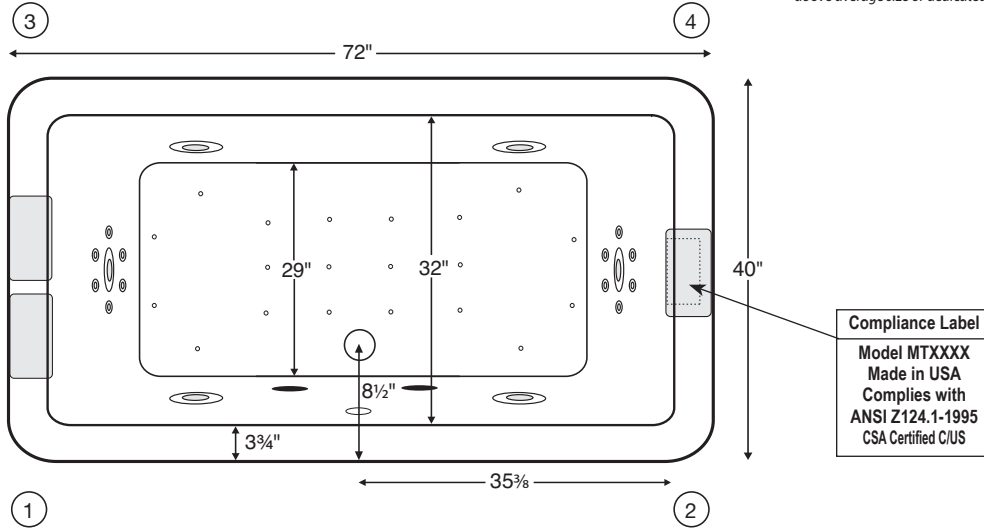
Normandy 3

72" x 40" x 20.75"

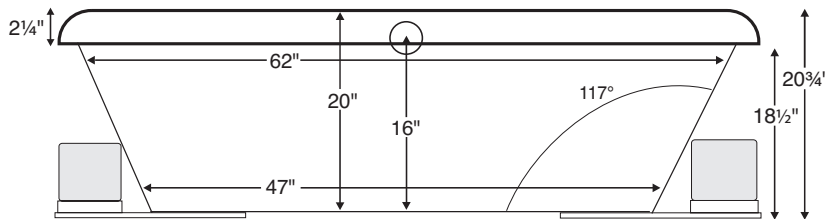


GENERAL SPECIFICATIONS:

Material - Acrylic
Installation - Drop-in (cannot be undermounted)
Not recommended as a tub/shower combination
Soaker Weight - lbs / kg
Average Fill - gal to above jet level
Maximum Fill - 87 gal to overflow
NOTE: Filling this tub to the maximum may require an above average size or dedicated water heater.



Numbered areas outside of tub represent possible stub-out locations for cleaning systems and Breda valves.
 Shown with Air Massage and Ultra Whirlpool Package.



IMPORTANT:
 Air baths and tubs with a pre-leveled foam base add 2-3" to overall tub height.

ELECTRICAL COMPONENTS & SPECIFICATIONS		
Required Electrical Service - 110 Volt		
Hydrotherapy Package	Components Included	GFCI
Standard Whirlpool	2-bhp pump	1-15 amp
Ultra Whirlpool	2 2-bhp pumps, inline heater	2-20 amp
Air Massage	heated blower	1-15 amp
Air Massage Elite	heated blower, chromatherapy	1-15 amp
Air Massage with Standard Whirlpool	2-bhp pump, heated blower	2-15 amp
Air Massage with Ultra Whirlpool	2 2-bhp pumps, inline heater, heated blower	2-20 amp
Air Massage Elite with Standard Whirlpool	2-bhp pump, heated blower, chromatherapy	2-15 amp
Air Massage Elite with Ultra Whirlpool	2 2-bhp pumps, inline heater, heated blower, chromatherapy	2-20 amp

For electrical requirements of tub options, see page C-2.
 CSA Certified C/US; ANSI Z124.1 for plastic tubs and ANSI 112.19.7 for whirlpool components.

IMPORTANT ORDERING & INSTALLATION INFORMATION:

- Before ordering or installing, please consider future access to equipment
- Tub deck / rim of tub is curved and not designed to mount a faucet
- Add bedding compound to fully level and support bottom of tub
- Tubs equipped with an air bath or a pre-leveled foam base are designed to rest on the floor *without* bedding compound provided the floor is level
- **Overall tub height is increased by approx. 2-3" when tub is equipped with any air bath package or when pre-leveled foam base is ordered.**
- Please measure tub **on site** before building tub decking
- Suction and control locations may vary
- Specifications and configurations are subject to change without notice
- Measurements are $\pm 1/2"$ and are subject to change without notice
- Measurements herein supersede all others published prior to publication date shown below

See the "Designer Collection Tubs Installation & Operation Manual" included with tub delivery or go to mtibaths.com/support/installation_operation/manuals for all the information necessary to install and operate the tub.

MTI's Customer Service Department is available Monday-Friday 8am-6pm EST at 800-783-8827 or customerservice@mtibaths.com to answer any questions pertaining to ordering or installation.



Hydrotherapy Packages	Package Contents	Standard Pump/Blower Locations	Part #	MSRP
Soaker	soaking bath - no jets		S176	\$2,270
Whirlpool Packages	<i>Standard Whirlpool</i> 6 point-massage jets, 2-bhp pump		P176	\$4,150
	<i>Ultra Whirlpool</i> 6 point-massage jets, 12 micro-jets with Tsubo massage, 2 2-bhp pumps, inline heater		P176U	\$6,680
Air Bath Packages	<i>Air Massage</i> 20 air jets, heated air blower, pre-leveled foam base (increases overall height 2-3")		AST176	\$4,870
	<i>Air Massage Elite</i> 30 air jets, heated air blower, Chromatherapy LED lighting, Spa Mode, pre-leveled foam base (increases overall height 2-3")		AE176	\$6,470
Air Bath / Whirlpool Combo Packages	<i>Air Massage with Standard Whirlpool</i> 6 point-massage jets, 2-bhp pump, 20 air jets, heated air blower, pre-leveled foam base (increases overall height 2-3")		AW176	\$6,880
	<i>Air Massage with Ultra Whirlpool</i> 6 point-massage jets, 12 micro-jets with Tsubo massage, 2 2-bhp pumps, inline heater, 20 air jets, heated air blower, pre-leveled foam base (increases overall height 2-3")		AU176	\$9,945
	<i>Air Massage Elite with Standard Whirlpool</i> 6 point-massage jets, 2-bhp pump, 30 air jets, heated air blower, Chromatherapy LED lighting, Spa Mode, pre-leveled foam base (increases overall height 2-3")		AEAP176	\$8,780
	<i>Air Massage Elite with Ultra Whirlpool</i> 6 point-massage jets, 12 micro-jets with Tsubo massage, 2 2-bhp pumps, inline heater, 30 air jets, heated air blower, Chromatherapy LED lighting, Spa Mode, pre-leveled foam base (increases overall height 2-3")		AEAP176U	\$11,515

Lead Time - Soakers and Whirlpool Packages - 5 business days
Air Baths and Combo Packages - 7 business days

NOTES:

• Air Baths, Pre-Leveled Foam Base or Frame Systems increase overall height by 2-3".

Premium Options	NOTE: part codes for all options listed in parenthesis.
Stream Bath - provides a relaxing water current (STREAM) \$1,695 <i>Available for soaker or air bath packages only. See p. C-3 for detailed specifications.</i>	
Radiance - integrated tub shell heating system (RAD100) \$999 <i>see p. C-5</i>	
Chromatherapy - underwater LED lighting (LE) \$560 <i>see p. C-6</i> <i>Included in some hydrotherapy packages listed above.</i>	
Stereo H₂O - includes 4 integrated audio transducers (STEREOH2O) \$1,099 <i>Requires audio source(s) and amplification not provided by MTI - see p. C-7.</i>	
Standard Options	
Standard Colors: White (CWH), Bone (CBN), Biscuit (CBS) Color Upgrade: (COL2) \$485 <i>See p. C-1 for individual color part codes.</i>	
Quick Ship - reduces lead time - please call for availability (QSPRI) \$350	
Textured, Slip-Resistant Bottom - meets ASTM F-462-1994 (TXBTM) \$70	
Virtual Spout - high-flow integrated tub filler (FPMJ) \$300 <i>see p. C-11</i>	
Inline Heater - included in some hydrotherapy packages listed above - <i>see p. C-9</i> Whirlpools, Combos or Stream Bath (HTI) \$495 <i>Uses existing pump.</i> Soaker or Air Baths (HTISOAK) \$695 <i>Includes a recirculating pump.</i>	
Installation Aids	
Pre-Leveled Foam Base - for soaker or whirlpools (PLFOAM) \$165 <i>see p. C-27</i>	

Accessories and Hardware for All Packages
Drain Kits - other finishes also available <i>see pp. C-12-13</i>
Toe-Tap with Slim-Line Integrated Overflow <i>Choose from: Chrome (SLOT), Brushed Nickel (SLOTBN), Polished Nickel (SLOTPN) or White (SLOTWH) \$400</i>
Toe-Tap with Round Overflow - Chrome (WOTTC) \$260 ; Brushed Nickel (WOTTBN) \$265 ; Polished Nickel (WOTTPN) \$315
Toe-Tap with Rectangular Overflow - Chrome (WOTRC) \$260 ; Brushed Nickel (WOTRBN) \$265 ; White (WOTRW) \$265
Cable Driven - Chrome (WOCDB) \$290 ; Brushed Nickel (WOCDBN) \$335 ; Polished Nickel (WOCDBPN) \$475 ; Oil-Rubbed Bronze (WOCDBOR) \$475
Lift & Turn - Chrome (WOC) \$115 ; Brushed Nickel (WOBN) \$210
Grab Bars - 9" Curved, set of 2 <i>see p. C-14</i> Acrylic - color-matched with tub - <i>standard colors only</i> (GB) \$290 Metal - Chrome (GBMCC), Brushed Nickel (GBMCBN) \$320
Pillows - from \$115 <i>see p. C-14</i>
Teak Bath Mat (TK-MAT3018) \$395 <i>custom sizes also available - see p. C-15</i>
Accessories & Cleaning Systems for Whirlpool Packages
Trim Kits - <i>must be ordered at time of tub purchase; other finishes available - see p. C-19</i> Standard Whirlpool - Chrome (TRC) \$220 ; Brushed Nickel (TRBN) \$550 Ultra Whirlpool - Chrome (TRCU) \$295 ; Brushed Nickel (TRBNU) \$750
Pump Upgrade - 3-bhp (PUMP3) \$230
Additional Jet Options <i>see p. C-18</i>
Whirlpool Cleaning Systems - <i>see pp. C-20-24</i> Fill-Flush (FFSO) \$560 ; Simple Touch (FFE) \$650
Ozonator - bath water purification system (OZONE) \$495 <i>see p. C-25</i>

Note: Addition of options may alter standard pump/blower locations shown above.